

Nottingham HF Rambling Club Newsletter Feb-March 2024



www.nottinghamhframblingclub.org.uk

President	Warren J
General Secretary	Jane R
Treasurer	Anca V
Rambles Secretary	Teresa M
Newsletter	Svetlana L
Social Events	Gillian W
Wednesday Events	Jane R

president@nottinghamhframblingclub.org.uk
secretary@nottinghamhframblingclub.org.uk
treasurer@nottinghamhframblingclub.org.uk
rambles@nottinghamhframblingclub.org.uk
newsletter@nottinghamhframblingclub.org.uk
outings@nottinghamhframblingclub.org.uk
wrambles@nottinghamhframblingclub.org.uk

Coach Rambles

The cost of the Sunday coach rambles is £12 for members and £15 for non-members. This still represents great value for money. It would be helpful if everyone could bring the correct amount in cash to make things easier for the volunteers collecting the fares. Anyone who comes on a walk but does not travel on the coach will be charged £5. Payment in cash should be made to the leader of the walk.

Unless otherwise stated, the coach picks up at County Hall, West Bridgford at 9am, Bus Stop on Maid Marian Way (just round the corner from Mount Street) at 9.15am, then the Nuthall pub on the A610 at 9.25 am. Please specify pick-up point when booking. Pre-booking is essential. There is an option for a pick-up in Keyworth /Tollerton (pick-up time 8.40am) but this **must** be requested in advance when booking. In the event of bad weather, please contact the organiser before leaving home. **The Sunday coach rambles are not open for booking more than two weeks in advance. Cancellations must be notified before or on the Thursday before the date of the Sunday coach ramble by phoning David & Gillian on 0115 9568375 otherwise you will be fined. Please do not turn up on a walk without booking because we may have to turn you away.** Wear suitable clothing and walking boots dependant on the weather forecast for the day.

Wednesday Car/Bus Rambles. Unless otherwise stated these are circular walks sometimes with an optional pub lunch. Please arrive 5-10 minutes before the time advertised for the start of the walk.

CLUB ANNUAL LUNCH Saturday 17th February 12.30 for 1pm Lunch

We are planning a club annual lunch, to be held at Fothergills again. We will dine in the upstairs room of Fothergills, Castle Road, Nottingham, NG1 6AA (Opposite the Robin Hood Statue by the Castle). MENUS WILL BE PUBLISHED IN MID-JANUARY AND YOU PAY FOR YOUR DRINKS AND FOOD ON THE DAY.

To book a place and for details, contact Jane R – contact details at the beginning of this newsletter.

Walks Programme

Sunday 11th February

	Winstar	Coach Ramble
'L' party: Leader – Warren J	10 miles. Linear Walk Cromford, Bonsall, Slaley. Bonsall Wood, Green Lane, Brightgate, Winstar.	
'M' party: Leader – Teresa M	7.5 miles. Winstar, Robin Hood's Stride, Harthill Moor, Elton, Winstar.	
'S' party: Leaders – Isabel H and Ann H	6 miles. A shorter version of Medium walk.	

Booking for this walk opens on Monday 29th January at 6pm.

Reserve your seat by contacting Gillian and David W on 0115 9568375; please state your name, contact details, title and date of the walk as well as the pick-up location. **Picnic lunch for all parties.**

Club Insurance

All walkers, including guests, members of the meetup website group or new walkers who have not already joined the club, as well as club members are insured for 'Public Liability' on any of our rambles and social outings. Please read our 'Risk Assessment' page on the club website:

<https://nottinghamhframblingclub.org.uk/risk-assessment/>

Wednesday 14th February**Toton/Bramcote Area****Car/Tram Ramble**

Leader: Jane R **Direction by car:** Park at the Toton Lane Tram Terminus Park & Ride. Near to the A52 and Bardills Island, NG9 7JA. Grid Ref: SK 496 359

Direction by tram: Catch any tram for the Toton Lane Terminus, to arrive before 10.15am. Journey from the Old Market Square should take not more than 35 mins. Check tram times nearer the date of the walk.

Start time: 10.30am. 7 miles approx. A circular walk with a few ups and downs with some stiles over fields, through woodlands and parkland. Possible stop for coffee on the way back. **Picnic Lunch or there are cafes at the end of the walk near the tram terminus.**

Sign up by contacting Jane R on **contact details at beginning of newsletter** to give the leader some idea of numbers; Please state your name, contact details, the title and date of the walk when booking.

Sunday 25th February**Cromford****Coach Ramble**

Leaders: 10 miles. Linear: Ambergate, Fritchley, Park Head, Hilltop, Crich Monument, Upper Holloway, Bow Wood, Cromford.
 'L' party – Warren J
 'M' party – Teresa M 7.5 miles. Circular: Cromford, Lea, Dethick, Tansley, Riber, Cromford.
 'S' party – Jane R 6 miles. Circular: Cromford, High Peak Junction, High Peak Trail, Black Rocks, Intake Lane, Cromford

Booking for this walk opens on Monday 12th February at 6pm.

Reserve your seat by contacting Gillian and David W on **0115 9568375**; please state your name, contact details, title and date of the walk as well as the pick-up location. **Picnic lunch for all parties.**

Wednesday 28th February**Denby Pottery Area****Car/Bus Ramble**

Leader: Parminder B 7/8 miles circular walk. Meet at 10.15am for 10.30am start at the Denby Pottery, Unit 5, Bemrose Park, Wayzgoose Drive, Derby, DE5 8NX. GR SK 393 473. PLEASE BRING WALKING POLLS – MAYBE MUDDY UNDERFOOT.

Directions by car: Meet in the car park on the right-hand side as you drive in to Derby Pottery.

Directions by bus: Red Arrow from Nottingham Victoria Bus Station 8.40am (QMC 8.50am) arriving Derby Bus Station 9.20am. Catch the TrentBarton bus 9.1 or 9.3 from Derby Corporation Street, buses every 15 minutes. Should arrive 10am to 10.10am at Derby Pottery. **Could possibly arrange car sharing.**

A pleasant walk-through woods, paths, fields and road. Some beautiful views along the way. A few easy stiles. LUNCH OPTIONS on site hot buffet, and cold or picnic if desired. Also, after walk you have shopping options too!

Non walkers are invited to join us for lunch. Please advise the leader in advance.

Sign up by contacting Jane R on **contact details at beginning of newsletter** to give the leader some idea of numbers; Please state your name, contact details, the title and date of the walk when booking.

Sunday 10th March**Ashford in the Water (circular)****Coach Ramble**

Leaders: 'L' party – Mick A 10 miles. Ashford in the Water, Sheldon, Magpie Mine, Over Haddon, Ashford in the Water.

'M' party – Glenis K 7.5 miles. Shortened version of the Long walk.

'S' party – Isabel H & Ann H 6 miles. Shorter version of the above.

All walks are circular. **Booking for this walk opens on Monday 26th February at 6pm.**

Reserve your seat by contacting Gillian and David W on **0115 9568375**; please state your name, contact details, title and date of the walk as well as the pick-up location. **Picnic lunch for all parties.**

Wednesday 13th March**Borrowash/ Elvaston Castle Walk****Car/Bus Ramble**

Leader: Dennis G **Directions by car:** Borrowash Co-Op Car Park. Victoria Ave, Borrowash, Derby DE72 3HE
 Tel: 07776 298121 What 3 Words = <https://w3w.co/producing.unstable.horn>

Directions by bus: Indigo (Trent Barton) from Nottingham to Victoria Avenue Borrowash. Or take I4 from Nottingham, Friar Lane Stop F to Borrowash, Victoria Avenue

Start time: 10:30 am from Borrowash Cross Roads. **Distance:** about 5 miles.

An interesting spring walk from Borrowash Centre into the grounds of Elvaston Castle to admire the gardens and trees including some large Redwoods. There will be time to wander around the castle and stop for coffee.

Dogs are welcome on this walk. We can have lunch either in the café or bring your own picnic to sit in the grounds.

Non walkers are invited to join us for lunch. Please advise the leader in advance when booking.

Sign up by contacting Jane R **contact details at beginning of newsletter** to give leader some idea of numbers. Please state your name, contact details, the title and date of the walk when booking.

Sunday 24th March

Tideswell (Circular)

Coach Ramble

Leaders: 'L' party – Warren J 10.5 miles. Tideswell, Miller's Dale, Priestcliffe, Blackwell, Wye Dale, Wormhill, Upper Monk's Dale, Tideswell.
'M' party – Teresa M 7.5 miles. Shortened version of Long Walk.
'S' party – Chris N 6 miles. A shorter version of Medium walk. Circular Walk

Booking for this walk opens on Monday 11th March at 6pm.

Reserve your seat by contacting Gillian and David W on 0115 9568375; please state your name, contact details, title and date of the walk as well as the pick-up location. **Picnic lunch for all parties.**

Wednesday 27th March

Bennerly Viaduct, The Lions & Strelley Hall

Car/Bus/Train Ramble

Leader: Chris T **Directions by bus:** 27 service, Kimberley-Ilkeston or get the Trent Barton bus the 'TWO' from the Victoria Centre, Nottingham, buses every 15 mins, journey time approx. 40 mins.
Mob: 07546834545 **Directions by car:** Parking available at the Railway station £2.50 after 10.00am, DE75TD, OS GRID REF 506 421
& Jane R
Mob: 07896725396

Directions by train: Northern service to Leeds which stops at Ilkeston leaves Nottingham every 44mins and journey time to Ilkeston is 23mins. Please check train times nearer the date.

Start Walk: Ilkeston Railway Station 10.30am - promptly.

Distance: Long walk 7.5 miles. Short walk 6 miles via Kimberley.

We follow the old Great Northern Railway track bed into Awesworth Village & then climb out via footpaths & observing the Lions before arriving at Strelley Hall for a Cafe' stop at The Mulberry tree - this has outside seating for people with pickups. We make our way back to Ilkeston Station via the Nottingham Canal towpath. Expected time back at the station 3pm.

Non walkers are invited to join us for lunch. Please advise the leader in advance when booking.

Sign up by contacting Jane R contact details at beginning of newsletter to give leader some idea of numbers. Please state your name, contact details, the title and date of the walk when booking.

REPORT ON DECISIONS TAKEN AT THE AGM 2023

14 club members attended the meeting at Middle Street Resources Centre, Beeston

Membership subscription for 2024: The committee decided that the annual club subscription will remain the same as last year i.e., for a single person it will be **£15** and **£25** for a family.

Coach Fares: Teresa M reported that Littles have increased the coach fares for our Sunday rambles by 7% for 2024. It may therefore be necessary to increase the fares the club charges per person next year - a committee decision.

Election of the Officers of the Club: Rambles' Secretary: Teresa Marjoram; Treasurer: Anca Vais
General Secretary & Wednesday Rambles Secretary: Jane Restorick, Social Secretary: Gillian Wayte
All officers were voted in unopposed.

Election of committee members: Membership Secretary: Caroline Hooker; Newsletter Editor: Svetlana L. All committee members were voted in unopposed. Liz Brown & Yvette Gibberd have offered to sit in on meetings when they can.

Appointment of Honorary Examiner for 2024: Tony Wilson. Voted in unopposed

AGM 2024: Time and place for the AGM next year to be decided at the next committee meeting.

Welcome to New Members

We have one new member join the club since the last newsletter: **Hilda A.** She is a very welcome addition to the club.

Holidays

Late Autumn Coach Holiday Organised by OUR club 2024

Sept. 28th to Oct. 2nd, SCARBOROUGH, at the Cumberland Hotel - £385 per person

THIS HOLIDAY HAS BEEN CANCELLED. MAYBE POSTPONED TILL NEXT YEAR.

Gillian will refund your deposits on the next Sunday Coach Ramble.

For any enquiries, please contact: Gillian W. on 0115 9568375

Early Spring Coach Holiday Wayfarers/Notts HF 2024

March 11 - 15, Sandown, Isle of Wight in a 2 star hotel - £340.00pp

This holiday is now fully booked. If you still wish to book a place on this holiday you will have to go on a waiting list. For any enquiries, please contact: Jane R, contact details at the beginning of this newsletter.

Food for Thought

Shared on Facebook by Steven Finlayson – Steven setup our main club website and still continues to sort out occasional technical problems without charging us anything for the service.

🔴 BREAKING NEWS!!

We are done celebrating Christmas!!! We are welcoming a New Year!!!

I'm Not Taking Anything With Me Into 2024!!!

If you owe me, don't worry about it!!

If you wronged me, it's all good!!

If you're beefing with me, you won!!

If we aren't speaking, it's cool. Be safe and I still wish you well!!

If you're talking about me, THANKS for the advertisement!!

If you don't deal with me, continue not to!!

If you don't like me, I don't care!!

If you left me hanging, don't pick me up!!

If you feel I wronged you, I apologize!!

In all things I forgive you!!

Life is TOO SHORT for all this "extra" UNNECESSARY DRAMA! No one is promised tomorrow ❤️

Happy New Year to you all! 🍷🍷



English Nursery Rhyme

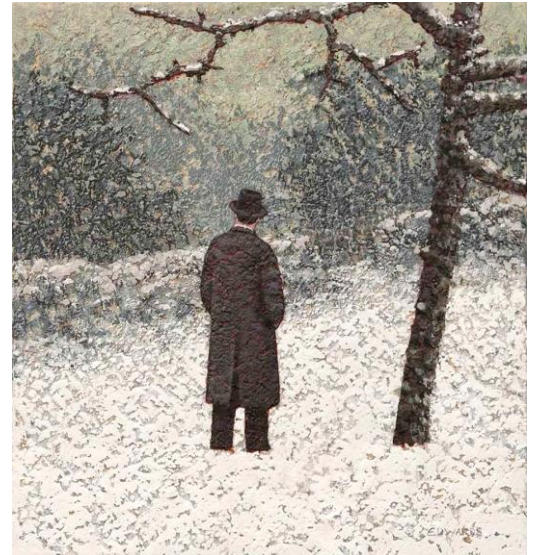
They hang the man and flog the woman
That steal the goose from off the common,
But let the greater villain loose
That steals the common from the goose.

The law demands that we atone
When we take things we do not own,
But leaves the lords and ladies fine
Who take things that are yours and mine.

- circa 1764

Go out for a Walk

Find meaning. Distinguish melancholy from sadness. Go out for a walk. It doesn't have to be a romantic walk in the park, spring at its most spectacular moment, flowers and smells and outstanding poetical imagery smoothly transferring you into another world. It doesn't have to be a walk during which you'll have multiple life epiphanies and discover meanings no other brain ever managed to encounter. Do not be afraid of spending quality time by yourself. Find meaning or don't find meaning but 'steal' some time and give it freely and exclusively to your own self. Opt for privacy and solitude. That doesn't make you antisocial or cause you to reject the rest of the world. But you need to breathe. And you need to be. ~Albert Camus



Committee Meeting

The next committee meeting is on **Thursday 21st March**. If any member wishes to raise a topic for discussion, please let any committee member know.

April - May Newsletter

The next newsletter will be published in mid-March. Items for inclusion should be submitted to the editor **NOT LATER THAN 29th February**



Better Walking Altogether

www.hfholidays.co.uk

Tel: 0845 470 8558

For details and brochures, contact: HF Holidays
Catalyst House, 720 Centennial Court,
Centennial Park, Elstree, Herts WD